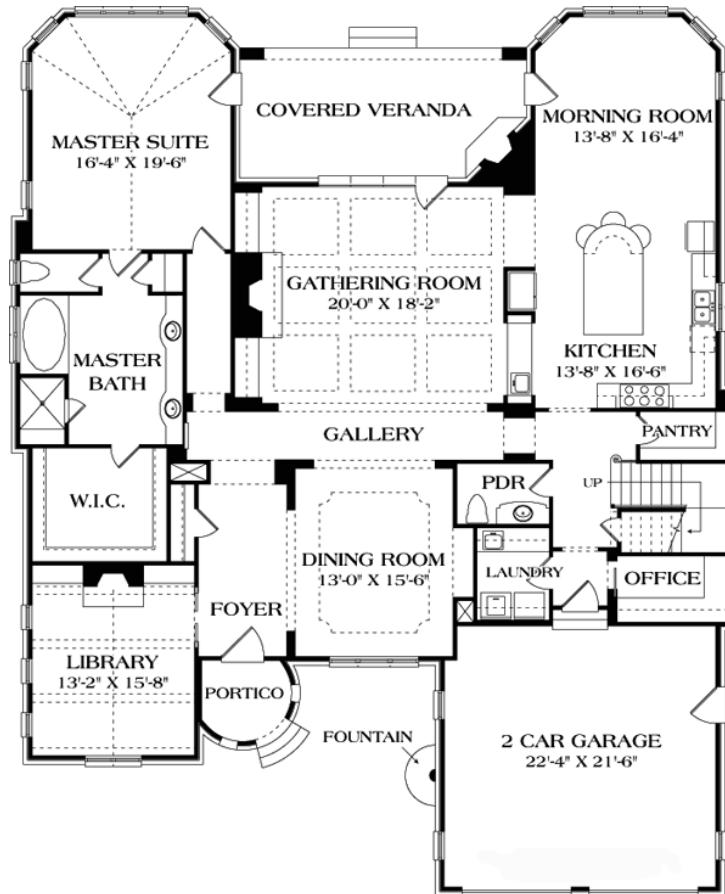
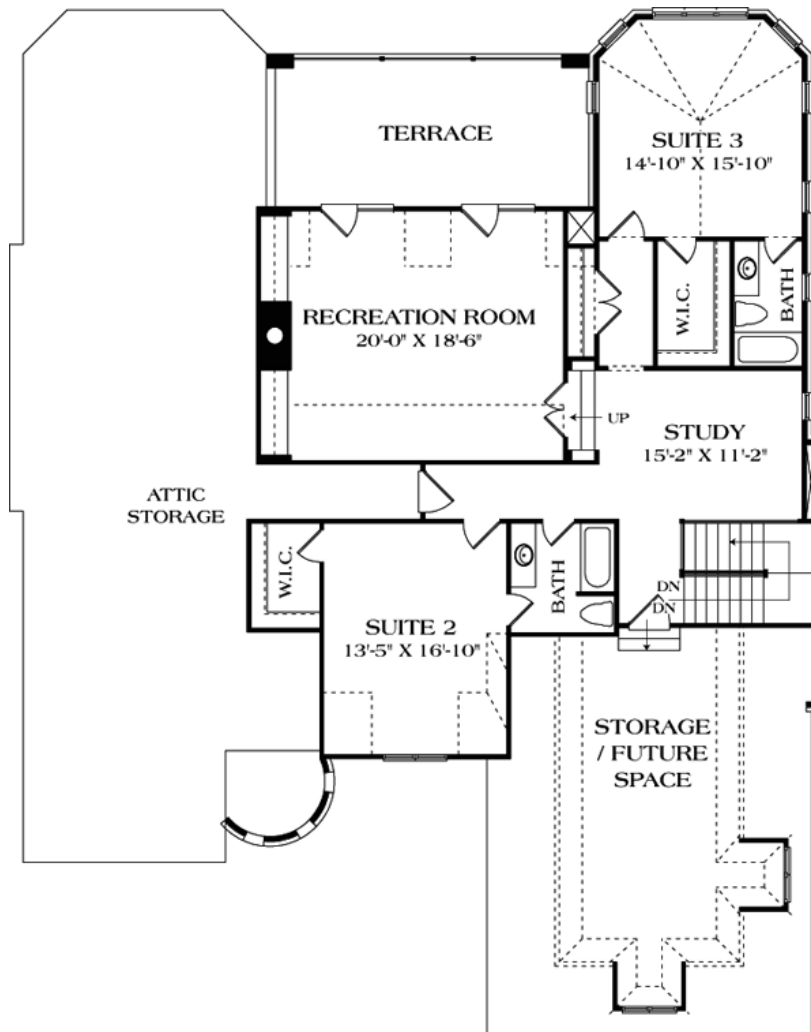




4306 Skye





- **Total Living Area: 4306**
- Main Living Area: 2763
- Upper Living Area: 1543
- Garage Area: 504
- Garage Type: Attached
- Garage Bays: 2
- House Width: 59'10
- House Depth: 73'2
- Number of Stories: 2
- Bedrooms: 3
- Full Baths: 3
- Half Baths: 1
- Primary Roof Pitch: 0
- Roof Framing: Unknown
- Formal Dining Room: Yes
- FirePlace: Yes
- 1st Floor Master: Yes
- Main Ceiling Height: 10'
- Upper Ceiling Height: 9'

Prices, plans, dimensions, features, specifications, materials and availability of homes or communities are subject to change without notice or obligation. Illustrations are artist depictions only and may differ from the final construction. Not all options and/or elevations are available in all communities. Copyright 2015 Unrivaled Homes – All Rights Reserved. For more information please visit [www.unrivaled-homes.com](http://www.unrivaled-homes.com).

