

1 Story

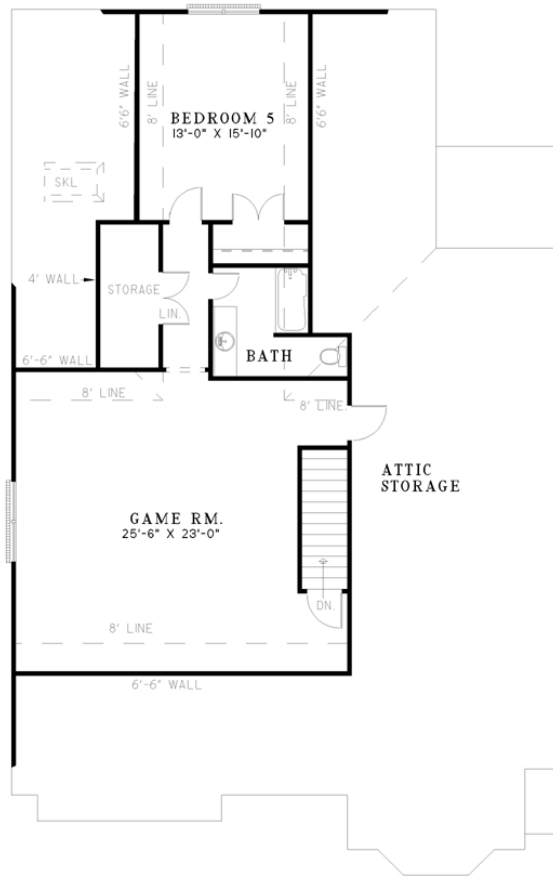
Base Price \$519,990
Optional second floor \$45,000



4303 Montana



Prices, plans, dimensions, features, specifications, materials and availability of homes or communities are subject to change without notice or obligation. Illustrations are artist depictions only and may differ from the final construction. Not all options and/or elevations are available in all communities. Copyright 2015 Unrivaled Homes – All Rights Reserved. For more information please visit www.unrivaled-homes.com.



Upper Floor

- **Total Living Area: 4004**
- Main Living Area: 2292
- Upper Living Area: 1712
- Garage Area: 863
- Garage Type: Attached
- Garage Bays: 3
- House Width: 64'8
- House Depth: 86'6
- Number of Stories: 2
- Bedrooms: 4
- Full Baths: 3
- Half Baths: 1
- Max Ridge Height: 37'7 from Front Door Floor Level
- Primary Roof Pitch: 14:12
- Roof Framing: Unknown
- Porch: 398 sq ft
- 1st Floor Master: Yes
- Main Ceiling Height: 10
- Upper Ceiling Height: 9

