

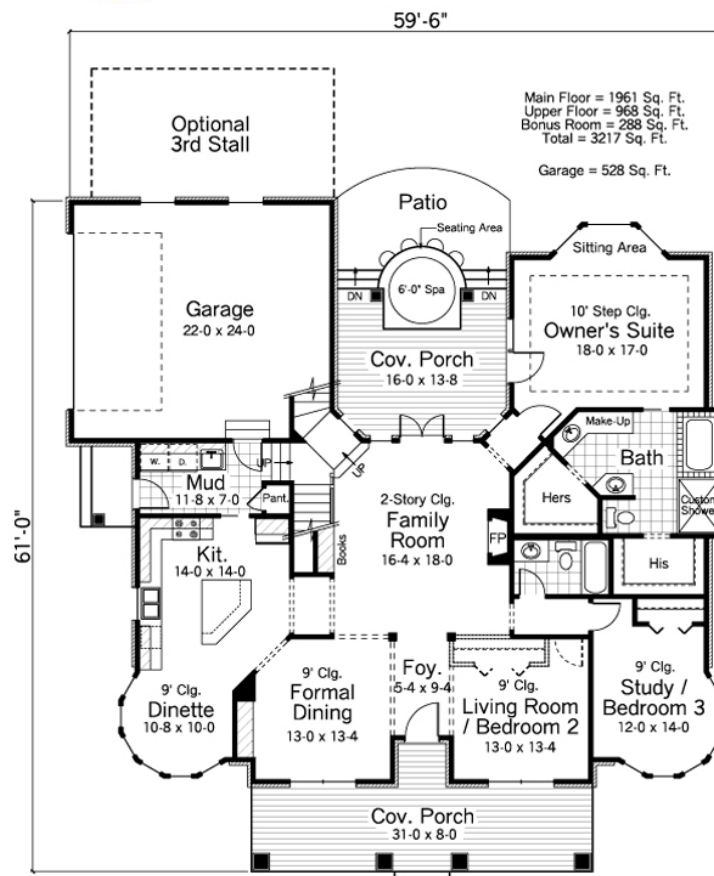
1.5 Story

Starting at \$239,900



# Unrivaled Homes

## 1961 Arlington

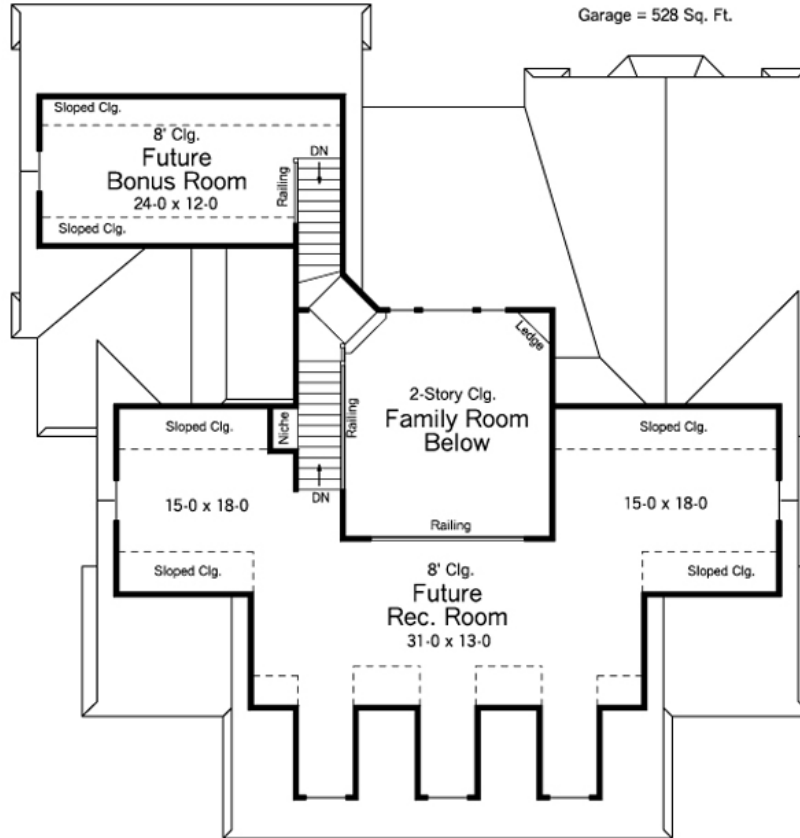


Prices, plans, dimensions, features, specifications, materials and availability of homes or communities are subject to change without notice or obligation. Illustrations are artist depictions only and may differ from the final construction. Not all options and/or elevations are available in all communities. Copyright 2015 Unrivaled Homes – All Rights Reserved. For more information please visit [www.unrivaled-homes.com](http://www.unrivaled-homes.com).

Upper Floor \$47,000  
Bonus Room \$14,000

Main Floor = 1961 Sq. Ft.  
Upper Floor = 968 Sq. Ft.  
Bonus Room = 288 Sq. Ft.  
Total = 3217 Sq. Ft.

Garage = 528 Sq. Ft.



• **Total Living Area: 1961**

- Main Living Area: 1961
- Upper Living Area: 968
- Bonus Area: 288
- Garage Area: 528
- Garage Type: Attached
- Garage Bays: 2
- House Width: 59'6"
- House Depth: 61'
- Number of Stories: 2
- Bedrooms: 3
- Full Baths: 2
- Max Ridge Height: 27'
- Primary Roof Pitch: 10:12
- Roof Framing: Truss
- Porch: 500 sq ft
- Formal Dining Room: Yes
- FirePlace: Yes
- 1st Floor Master: Yes
- Main Ceiling Height: 9'
- Upper Ceiling Height: 8'