

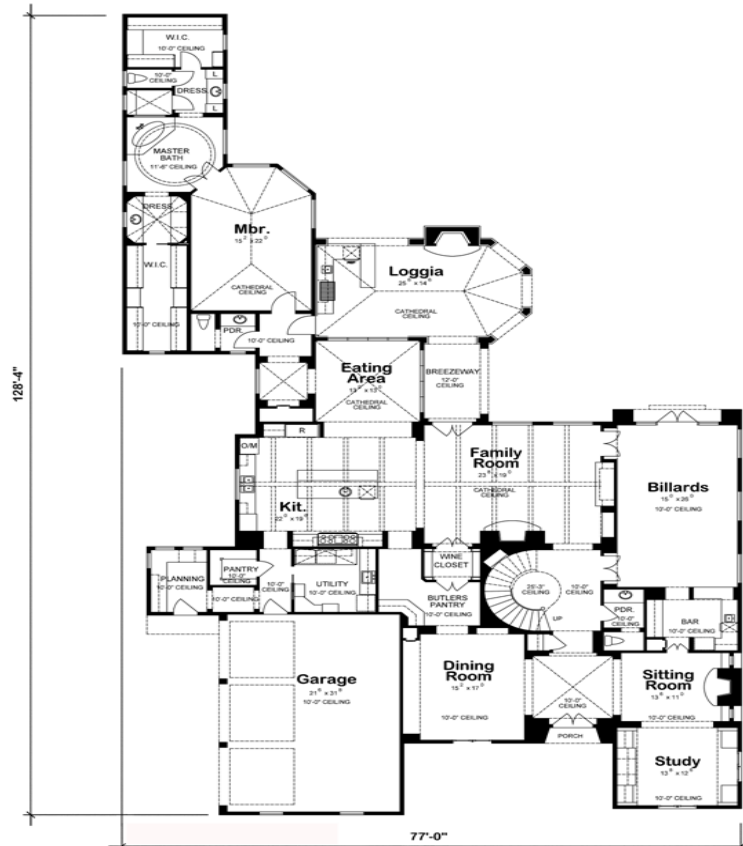
2 Story

Base Price \$910,000

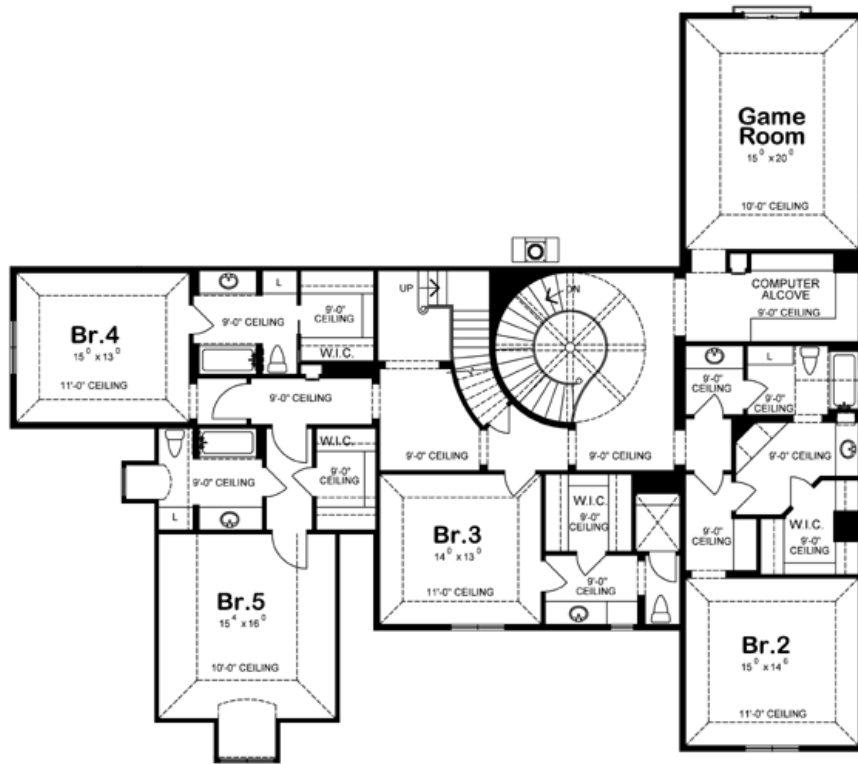


Unrivaled Homes

7004 Kent



Prices, plans, dimensions, features, specifications, materials and availability of homes or communities are subject to change without notice or obligation. Illustrations are artist depictions only and may differ from the final construction. Not all options and/or elevations are available in all communities. Copyright 2015 Unrivaled Homes – All Rights Reserved. For more information please visit www.unrivaled-homes.com.



- **Total Living Area: 7004**

- Main Living Area: 4323
- Upper Living Area: 2681
- Garage Area: 752
- Garage Type: Attached
- Garage Bays: 3
- House Width: 77'0
- House Depth: 128'8
- Number of Stories: 2
- Bedrooms: 5
- Full Baths: 5
- Half Baths: 2
- Max Ridge Height: 34'8
- Primary Roof Pitch: 14:12
- Roof Load: 30 psf
- Roof Framing: Stick
- Porch: 372 sq ft
- Formal Dining Room: Yes
- FirePlace: Yes
- 1st Floor Master: Yes
- Main Ceiling Height: 10
- Upper Ceiling Height: 9

